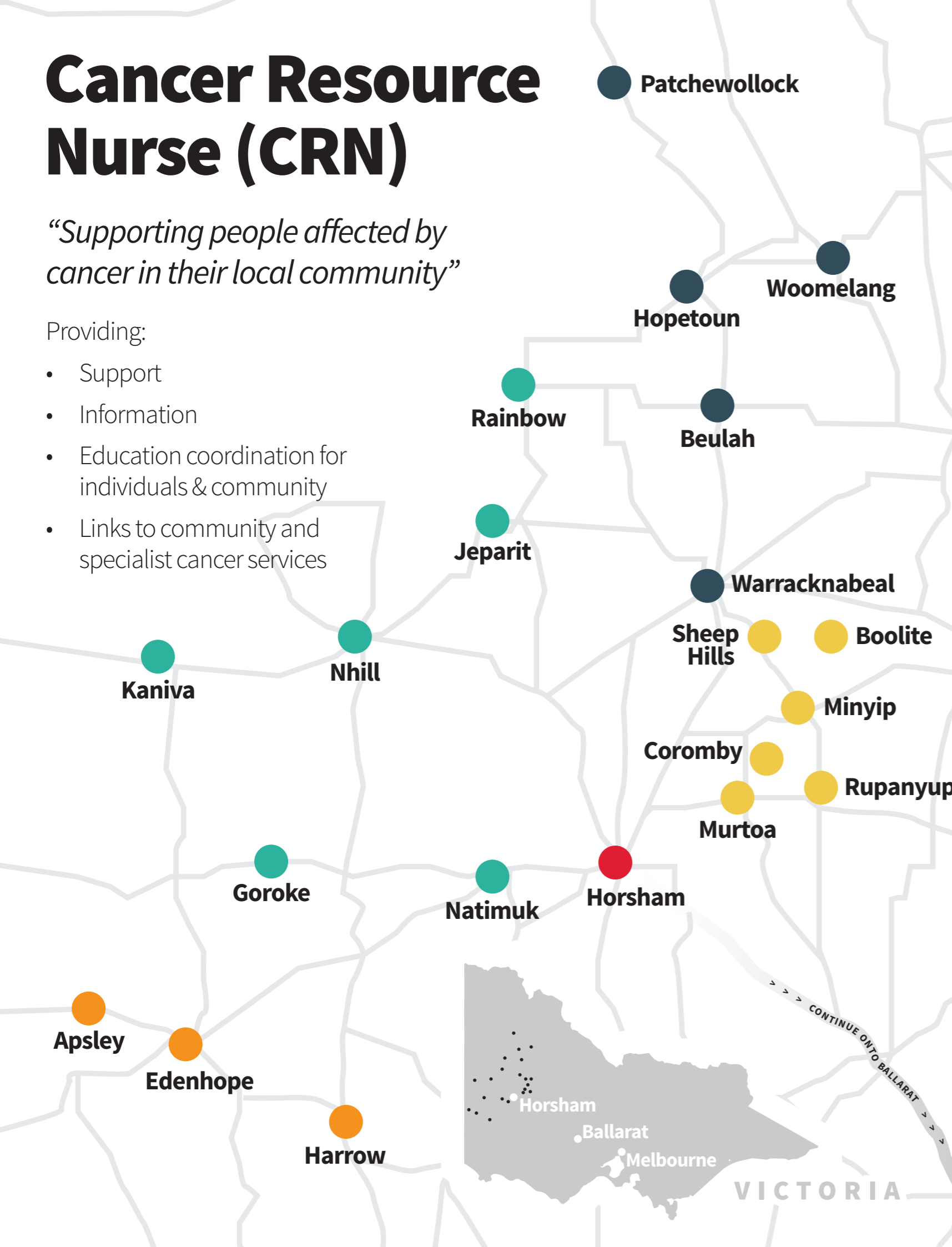


# Cancer Resource Nurse (CRN)

*“Supporting people affected by cancer in their local community”*

Providing:

- Support
- Information
- Education coordination for individuals & community
- Links to community and specialist cancer services



## Rural Northwest Health (RNH)

**Warracknabeal**  
(3 hours from Ballarat)

Ph: 03 5396 1200  
Em: crn@rnh.net.au

**Hopetoun**  
(3 hours and 30 mins from Ballarat)

Ph: 03 5083 2000  
Em: crn@rnh.net.au

**Beulah**  
(3 hours and 15 mins from Ballarat)

## West Wimmera Health Service (WWHS)

**Nhill, Jeparit, Kaniva, Rainbow, Goroke, Natimuk**  
(3 hours and 15 mins from Ballarat)

Ph: 03 5391 4267  
Em: crn@wwhs.net.au

## West Wimmera Health Service (WWHS)

**Minyip**  
(2 hours and 30 mins from Ballarat)

Ph: 03 5363 1200  
Em: crn@wwhs.net.au

**Murtoa**  
(2 hours and 20 mins from Ballarat)

Ph: 03 5363 0400  
Em: crn@wwhs.net.au

**Rupanyup**  
(2 hours and 10 mins from Ballarat)

Ph: 03 5363 1200  
Em: crn@wwhs.net.au

## Wimmera Health Care Group (WHCG)

**Wimmera Cancer Centre - Horsham**  
(2 hours and 30 mins from Ballarat)

Ph: 03 5362 3485  
Em: crn@whcg.org.au

**Wimmera Cancer Nurse Practitioner**  
(for complex care in all Wimmera Areas)

**Carmel O’Kane**  
Ph: 03 5381 9087  
Mob: 0427 811 269  
Em: carmel.o’kane@whcg.org.au

## Edenhope and District Memorial Hospital (EDMH)

(3 hours and 30 mins from Ballarat)

Ph: 03 5585 9845  
Em: crn@edmh.org.au

Ph: 03 5585 9888

Em: crn@edmh.org.au