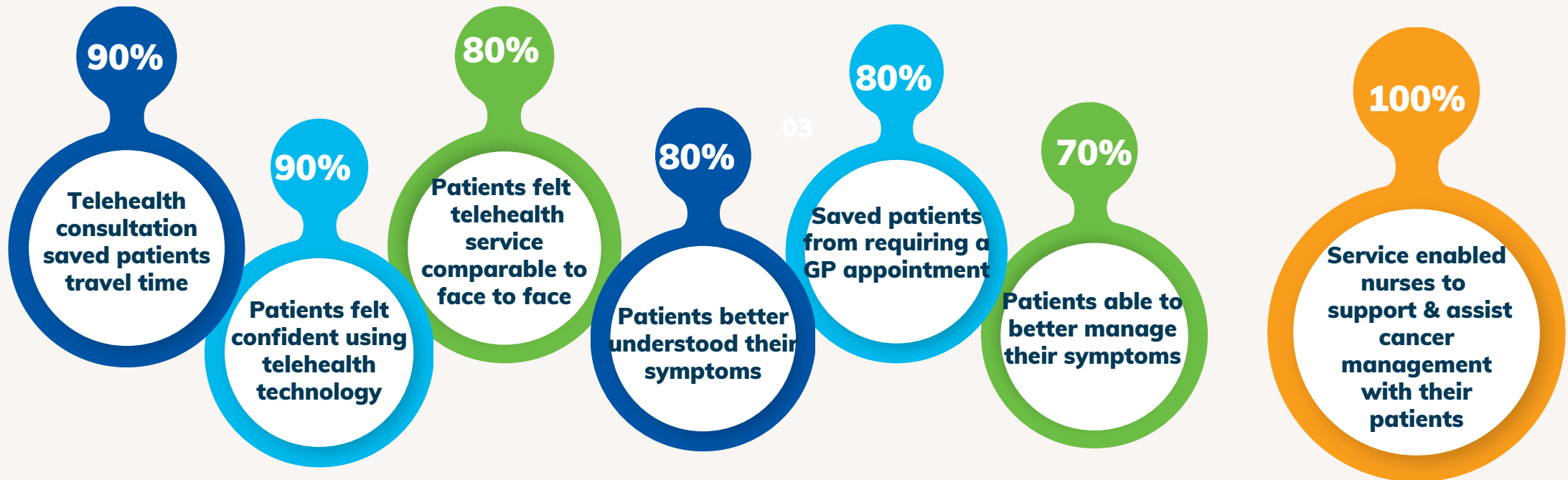


TELEHEALTH CANCER SUPPORT NURSE REVIEW CLINIC

The experience of patients and clinicians who used the service was overwhelmingly positive

Patients

Clinicians



Conclusion

The TCSN- RC improved access to services without the need for patient travel. It enabled a timely and efficient response to patient concerns allowing them to be resolved quickly. Additionally, it built oncology nurse competence and confidence in a new service delivery model that can be cultivated and grown